



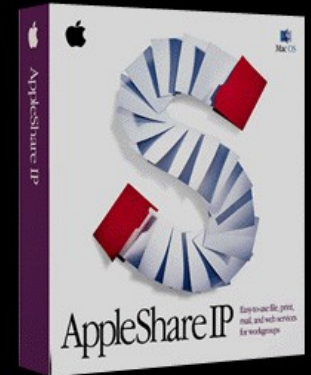
# AppleShare IP

6.2  
Name  
Title here

Apple Computer, Inc.

# AppleShare IP

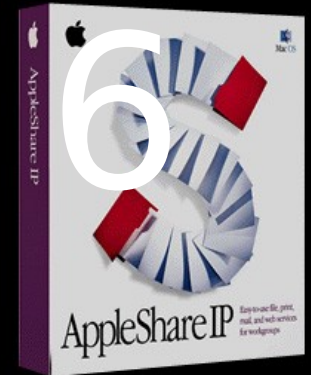
**Integrated suite of critical network services**



- Provides file, web, print, and mail services for local networks or the Internet
- Supports Mac, Windows, or any client using Internet protocols
- Powerful while still simple to use

# AppleShare IP 6

The world's easiest-to-use server software



- Rich, cross-platform services
- Internet standard protocols
- Web-based administration
- Outstanding performance
  - Fastest server for Mac clients
  - Comparable to NT for Windows clients

# AppleShare Evolution



## AppleShare

- Native support for Windows clients
- IMAP mail server
- Internet standard services and



## AppleShare

- Web-based administration
- Built-in firewall
- Sherlock searching



How can it get  
better?  
By streamlining the tasks of  
server managers.



# What's New?

## Improved services for the server administrator

- Centralized administration of user info
- Automation of key administration tasks
- More Sherlock search functionality
- Better protection from spam
- Improved print queue security

# Centralization

## Streamlining the server management process

- Administer user information once, in one place, and have it replicate to other servers
- Provide consistent account information across servers
- Ensure that password aging is handled correctly on all servers





# Shared Information

Secure and simple administration

- Ten secondary AppleShare IP 6.2 servers can share users, groups, and passwords from the primary server
- Secondary servers can control the length of time information is cached
- Secure server-to-server exchanges
- Firewall capabilities for increased security



# Private Folders

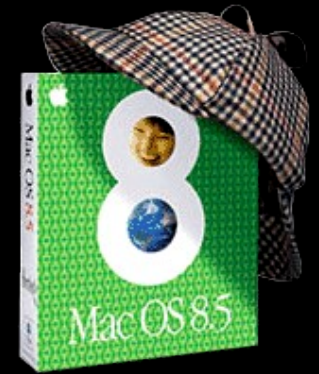
Automatic creation of a home folder at log-in



- Mountable volume appears with user's name
- Mac clients see only their own folder, eliminating clutter
- Available over any connection protocol—FTP, HTTP, SMB, AFP

# Sherlock

**Tightly integrated into AppleShare IP 6.2**



- Index any volume, partition, or folder
- Sherlock button now inside AppleShare
- Any Mac OS 8.5 or later client can search the server by content
- Index documents, including PDF and HTML
- All access privileges enforced

# Sherlock Plug-in

## Index and search AppleShare-hosted web sites

- Sherlock can index your web sites
- Any web browser can search your sites
- Sherlock on the server conducts the search
- Results are displayed to the web browser



# Control

# Unwanted Mail

fight spam automatically

- Refers unwanted mail to Realtime Blackhole List (RBL) of known spam originators
- Lets you point AppleShare to a locally run RBL server
- Extends and complements the existing host list security

# Mail



# Consolidation

Reduce server load

- Schedule mail downloads from remote POP accounts
- Distribute messages directly to designated users or groups
- Have AppleShare scan message headers for user names and distribute mail based on that information

# Managing the

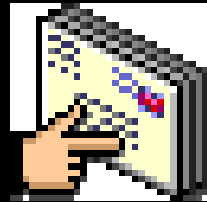
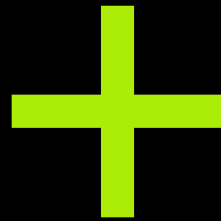
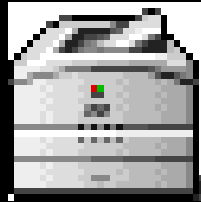
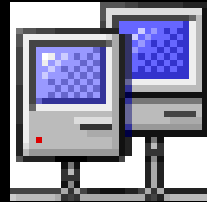


## Improved security and control for print queues

# Output

- Secured print queues are now accessible by Windows as well as Mac clients
- Mac OS clients can use name and password level security to access queues
- Incoming print jobs can be placed on hold to await manual release by the admin

# Complete Suite of Services



AFP

LPR

LPD

SMB

CIFS

PAP

ASIA

FTP

HTTP

SMTP

POP

IP

APOP


IMAP

TCP

ASWA

# Seamless File Sharing

Enter the Server Address:

 Aliases made of this Server will fail if TCP/IP is not available.

Cancel Connect

AppleShare IP 6.2

4 items

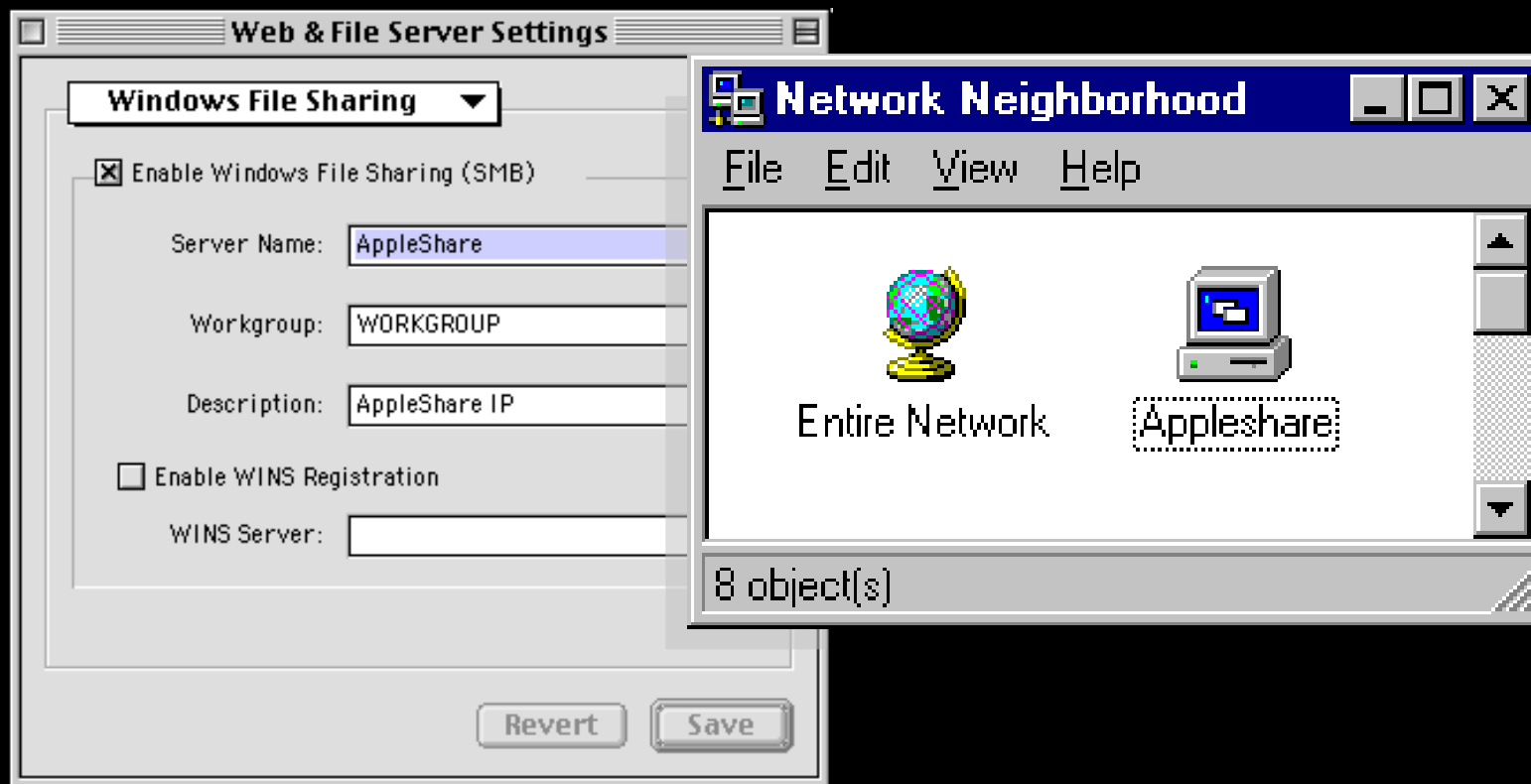
- DataBank
- Home
- Public
- Web Folder

DataBank

Name	Size	Date	Zone	Machine	Path
AppleShare 4.2.1		- 5/28/98	1	17.203.34.162	/DataBank/AppleShare 4.2.1
AppleShare HTML Help Files		- 9/26/98	1	17.203.34.162	/DataBank/AppleShare HTML He
AppleShare IP 5		- 5/28/98	1	17.203.34.162	/DataBank/AppleShare IP 5
AppleShare IP 6		- 7/22/98	1	17.203.34.162	/DataBank/AppleShare IP 6
AppleWorks		- 9/10/98	1	17.203.34.162	/DataBank/AppleWorks
At Ease		- 6/2/98	1	17.203.34.162	/DataBank/At Ease
Desktop Folder		- 9/30/98	1	17.203.34.162	/DataBank/Desktop Folder
Mac OS 8		- 5/28/98	1	17.203.34.162	/DataBank/Mac OS 8
Mac OS 8.1		- 5/28/98	1	17.203.34.162	/DataBank/Mac OS 8.1
Mac OS 8.5 Help		- 9/26/98	1	17.203.34.162	/DataBank/Mac OS 8.5 Help



# Part of the Neighborhood



# Flexible Print Handling

Print Server Activity

Server Status: Running

Queue Name	Jobs	Printers	Status
General Use Printer	0	1	The queue is operating normally.
Public Printer on 17.203.34.156			status: idle
Secure Printer (Faculty)			
Faculty Printer on 17.203.34.156			
Lab Printer (Hold Jobs)			
Lab Printer on 17.203.34.156			

3 Queues, 3 Printers

Edit Queue: Secure Printer (Faculty)

General Attached Printers Security

Enable Security

Require Password For Printing

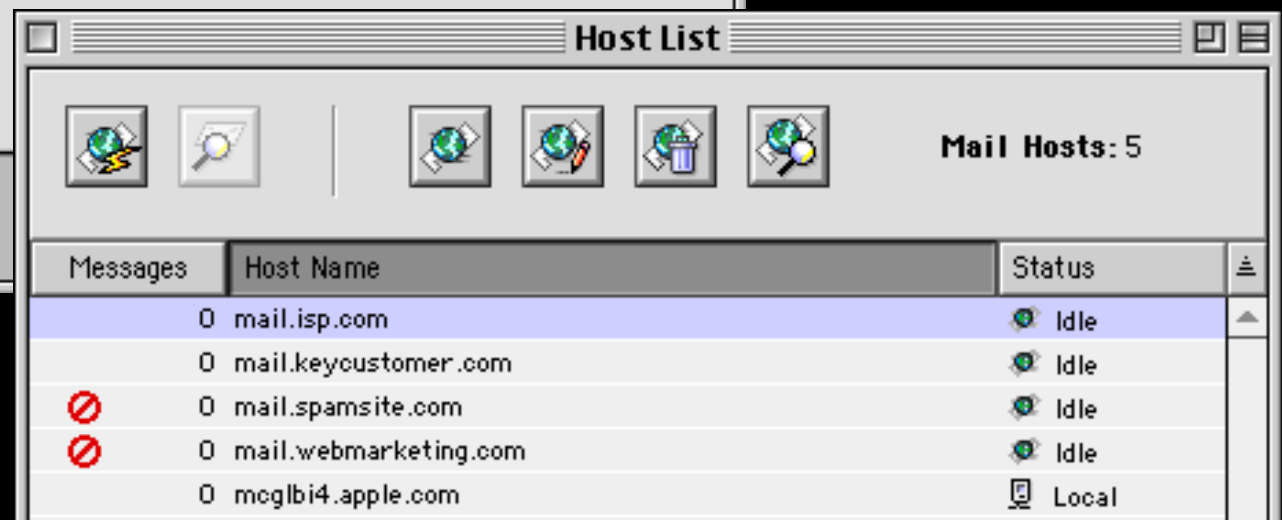
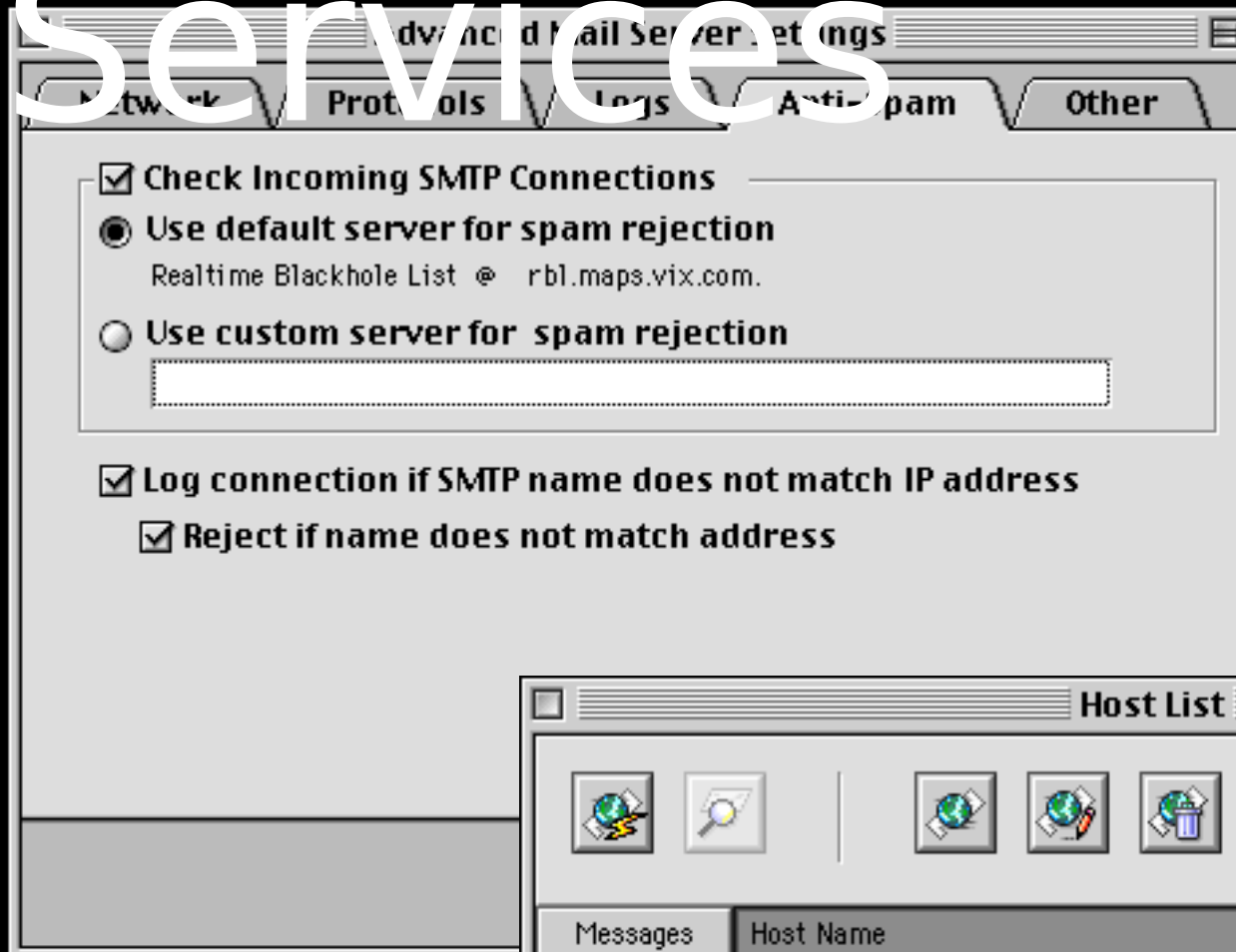
Kind Name

- Staff

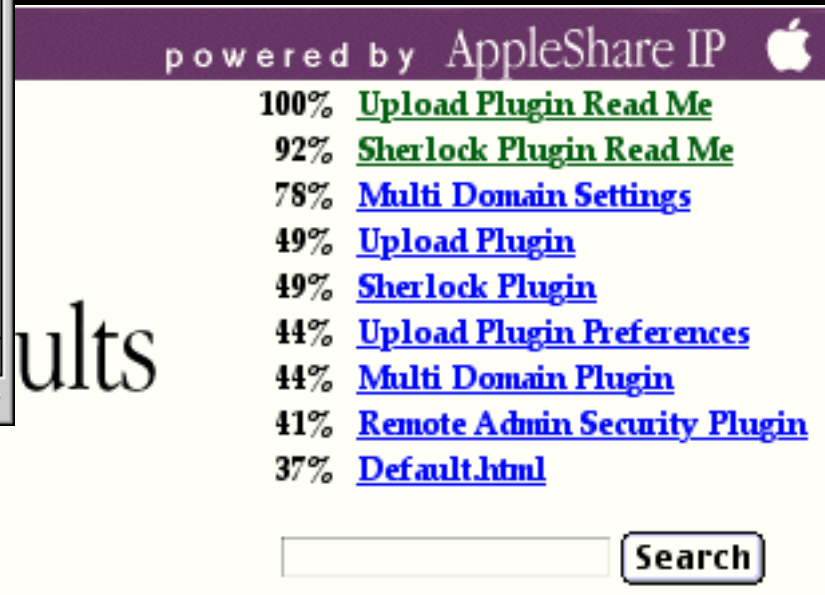
Users and Groups

- Admin
- George
- John
- Mail Administrator

# Powerful Mail Services



# Put It on the Web



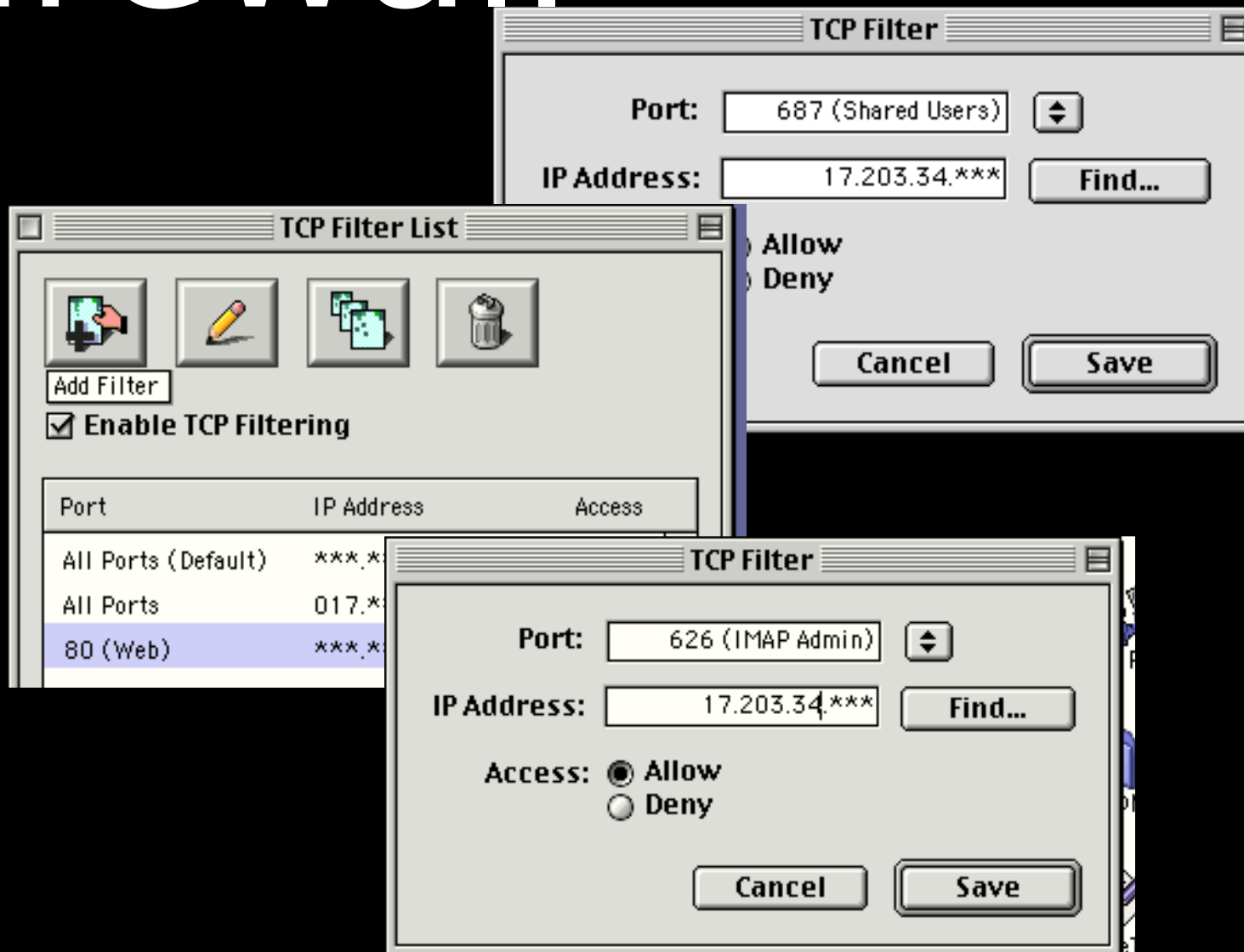
# Web-based Administration

The screenshot shows a web browser window displaying the Remote Server Administration interface for AppleShare IP 6. The browser's address bar shows the URL: `http://www.AppleShareIP.com/Remote%20Admin/Remote%20Admin.cgi`. The interface is divided into several sections:

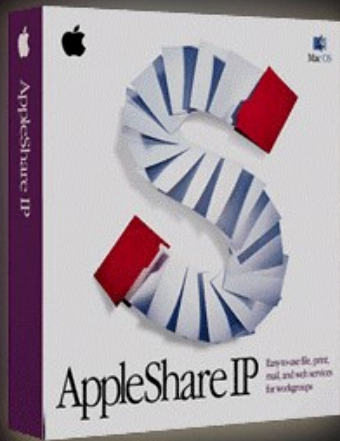
- Channels:** AppleShare IP 6, Status, Users, Web.
- Services and Status:**
  - Web & File Server: **Running**
    - Web: **Enabled**
  - AppleShare via TCP: **Enabled**
    - FTP: **Enabled**
  - Windows File Sharing: **Enabled**
    - Admin: **Running**
  - Mail Server: **Running**
    - IMAP: **Enabled**
    - SMTP: **Enabled**
    - POP: **Enabled**
    - PASS: **Enabled**
    - Finger: **Enabled**
    - Admin: **Running**
  - Print Server: **Running**
    - Admin: **Running**
- Web & File Server Activity:**
  - Percentage of Server Capacity:
  - Current User Activity: **14%**
  - Maximum User Activity:  % (10% - 100%)
  -

The browser window also shows a status bar at the bottom with the text "Applet Loaded".

# Firewall



# Real-world CCC on AppleShare IP 5



# Four Times the Scalability

CCC on AppleShare IP 6





# Network

# Performance

More than twice as fast as Windows NT Server

One large file (200MB)

New Mac  
Server G3  
450 MHz



72 Mbps

26 Mbps

Folder of 100 files  
(2MB each)

New Mac  
Server G3  
450 MHz

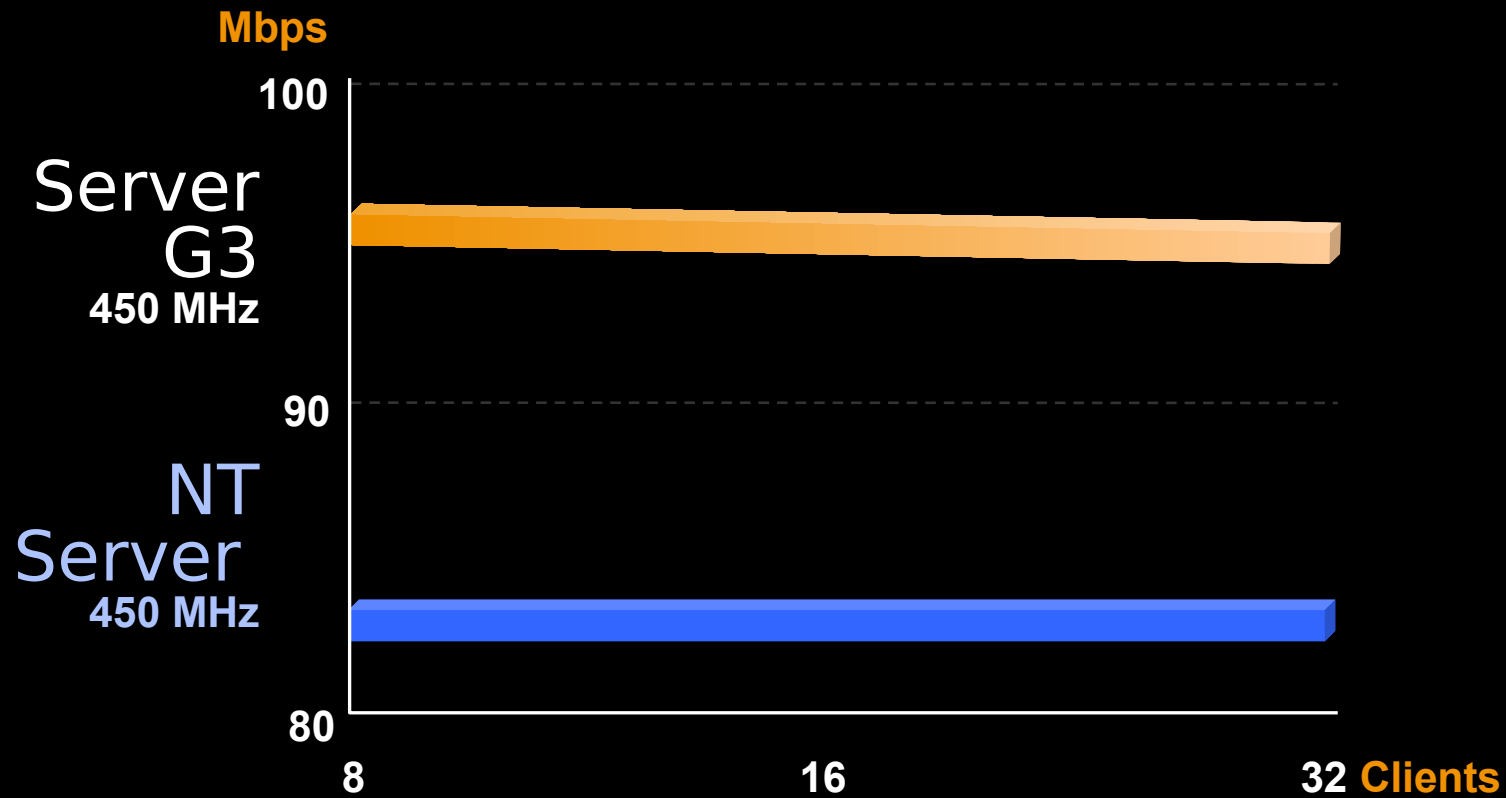


62 Mbps

20 Mbps

# Network Performance

Faster than NT Server across a heavy load



NetBench Seq. Read throughput from 8, 16 & 32 Power Mac clients in Mbps on 100BASE-T

# Who Should Buy AppleShare?



- Anyone interested in:
  - Publishing on the Internet
  - Cross-platform communication
  - Fast file sharing
  - Local or worldwide e-mail
  - Fast and simple access to information



# AppleShare IP 6.2

AppleShare IP 6.2	Retail Cost
10-client license*	\$499
50-client license*	\$999
Unlimited clients*	\$1,499
Upgrade from 4.x/5.0	\$499
Downloadable update from 6.x	<i>Free</i>

\* Limits apply only to simultaneous file and print server access.



# Macintosh Servers

400-MHz PowerPC G3 with AppleShare IP 450-MHz PowerPC G3

1MB cache

1MB cache

128MB SDRAM

256MB SDRAM

One 9GB 7200-

Two 9GB 10000-

\$3299

\$499

Ultra2 LVD SCSI

Ultra2 LVD SCSI

All Server G3 configurations come with:

10/100BASE-T Ethernet, 24x CD-ROM

(max.), USB,

FireWire, Mac OS 8.6, AppleShare IP

6.2,

Apple Network Assistant (10 client)

# BTO Options

Macintosh Server G3 with AppleShare IP 6.2



PowerPC  
G3  
Processor

400 MHz  
450 MHz



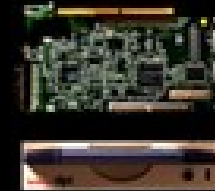
Memory

256MB  
384MB  
512MB  
768MB  
1GB



Hard Disk

Two 9GB 10,000-  
rpm Ultra2 LVD  
SCSI  
Three 9GB  
10,000-rpm  
Ultra2 LVD SCSI  
One 36GB 7200-  
rpm Ultra2 LVD  
SCSI  
Two 36GB 7200-  
rpm Ultra2 LVD  
SCSI  
Three 36GB



Other

Gigabit  
Ethernet  
Dual-Channel  
Ultra2 LVD  
SCSI Card  
Ultra SCSI  
Card  
LaCie External  
DDS-3 Tape  
Drive



# AppleShare IP 6.2 Demo



Think  
different.



Q&A